

First tooth, first birthday,  
**FIRST VISIT.**





Oh, Mama, I have so much to set up before Mariana's first birthday party today. Presents, party favors, piñata, cake.

Plus, we have Mariana's first dental visit today!

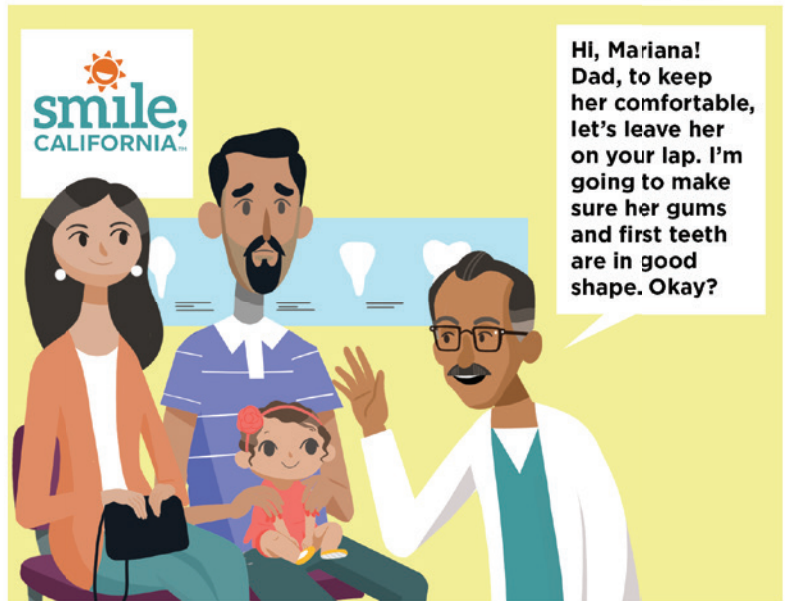


Dental visit? What does that have to do with little Mariana's birthday?

Every baby should have their first dental visit when their first tooth appears or by their first birthday. I learned about it on SmileCalifornia.org



You and Mario take her to the dentist, I'll prep the rest of the party.



Hi, Mariana! Dad, to keep her comfortable, let's leave her on your lap. I'm going to make sure her gums and first teeth are in good shape. Okay?




This won't hurt her, will it?

Not at all, just a quick look-see here... aaaand we are done!




Wow! That was easier than I thought!


Yep! The first visit is just a simple check-up. Here is a teeth development chart to keep track as her teeth come in.




Thanks, Dr. Anand. We'll see you in a few months for our son Oscar's molar sealants.



Surprise! Everything for the party is set-up and we are ready for all of the guests!



Of course! Anything for my babies! How was the dentist?




Mom! I can't believe you did all this!




Great! We got in and out of there in no time. And with Medi-Cal Dental, the visit was free!



It's true! It's part of our Medi-Cal dental coverage!



A free dental visit? I never thought I'd hear that in the same sentence!

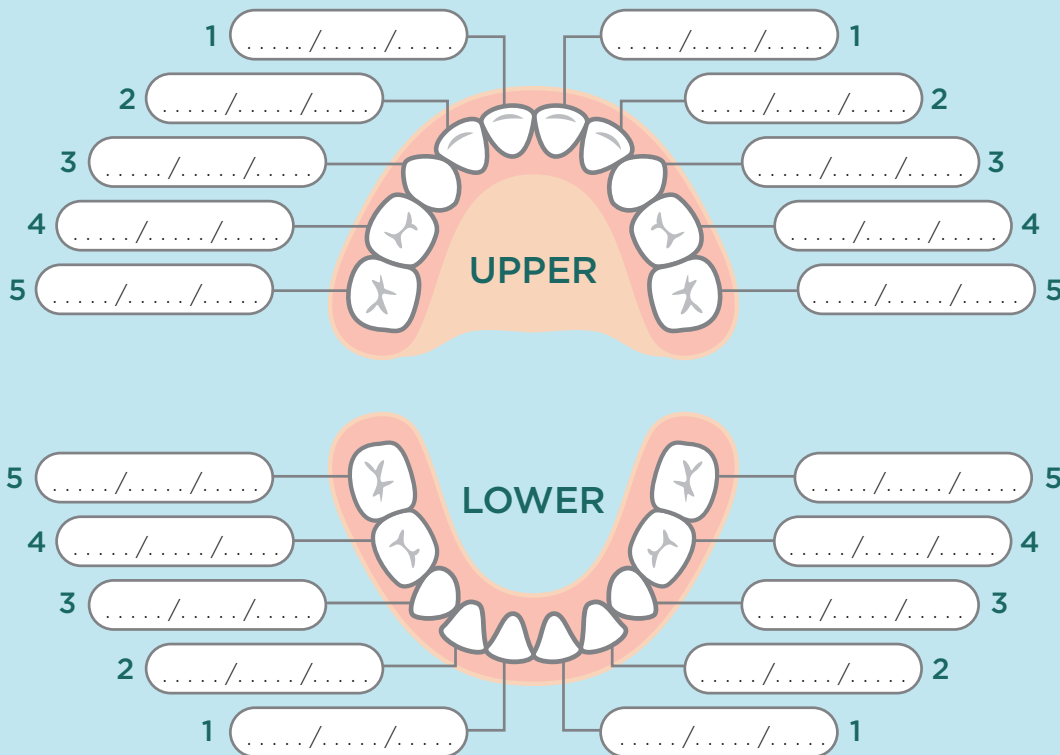


Good to know! We have Medi-Cal too, and this little guy is almost a year. I'm going to schedule his appointment very soon.



Excellent! But try not to schedule it on the same day as his big party... Trust me!

# Baby Teeth Development Chart



## UPPER TEETH

APPROXIMATE  
AGE OF  
ERUPTION

- |   |                 |              |
|---|-----------------|--------------|
| 1 | Central Incisor | 8-12 months  |
| 2 | Lateral Incisor | 9-13 months  |
| 3 | Canine (Cuspid) | 16-22 months |
| 4 | First Molar     | 13-19 months |
| 5 | Second Molar    | 25-33 months |

## LOWER TEETH

APPROXIMATE  
AGE OF  
ERUPTION

- |   |                 |              |
|---|-----------------|--------------|
| 1 | Central Incisor | 6-10 months  |
| 2 | Lateral Incisor | 10-16 months |
| 3 | Canine (Cuspid) | 17-23 months |
| 4 | First Molar     | 14-18 months |
| 5 | Second Molar    | 23-31 months |